
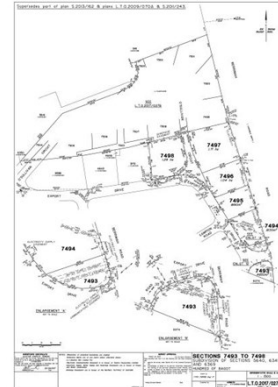


Lot 7501, Lot 7501 / 105 O'Sullivan Circuit, EAST ARM



SALE OR LEASE

105 O'SULLIVAN CIRCUIT
Sec 7501 | 13,200m²



Lot 7501 / 105 O'Sullivan Circuit East Arm

AREA m²: 13,300

PRICE: \$2,660,000

CONTACT:

Jenny Strang

0400 253 171

jenny.strang@landdevcorp.com.au

LOCATION:

East Arm

DESCRIPTION:

Industrial land - Lot 7501 / 105 O'Sullivan Circuit East Arm

This land is serviced and ready for development!



Darwin Business Park is a strategic land area situated close to Darwin East Arm Wharf and the Austral Asia Darwin Freight Rail terminal with major road and air transport connections.

The roads are designed for large truck movements with 8 metre road verges and 20 metre road pavements. This road is the entrance road to Darwin Business Park.

- Close to Darwin's East Arm Wharf
- 16 km from Darwin CBD
- Access to major road and air transport

www.landdevcorp.com.au

+61 08 8944 0900 | enquiries@landdevcorp.com.au | Level 2 – 37 Wood Street, Darwin NT 0800

IMPORTANT: The information contained within this listing has been obtained from sources believed reliable. Notwithstanding, Land Development Corporation has not verified the information contained herein and makes no guarantee, warranty or representation (express or implied) about the information contained herein. Subject to any unexcludable legislative provisions and to the full extent permitted by law Land Development Corporation accepts no responsibility or liability (including in negligence) for the information contained herein. Any projections, opinions, assumptions or estimates used are for example only and do not represent the current or future performance of the property. You and your advisors should conduct a careful, independent investigation of the property to determine to your satisfaction the suitability of the property for your needs. For terms of our Privacy policy please refer to the following website www.landdevcorp.com.au